



## INSTRUMENTAL ENSEMBLES AUDITIONS

### Tuba Packet

There are five (5) components to the tuba audition. All five components are required of all tuba performers.

- **Etude:** Blazhevich 70 Studies, Volume II (*Number 50*) [page 2]
- **Excerpt 1:** Strauss, “*Ein Heldenleben (Battle Scene)*” [page 3]
- **Excerpt 2:** Wagner, “*Ride of the Valkyries (Major Section)*” [page 3]
- **Excerpt 3:** Hindemith, “*Symphony in Bb, Mvt. I*” [page 4]
- **Solo:** Perform 1-3 minutes of any standard solo

For more detailed information on the tuba audition process, including scheduling, policies and procedures, please visit: [fineartscomm.lamar.edu/bands/auditions](http://fineartscomm.lamar.edu/bands/auditions)

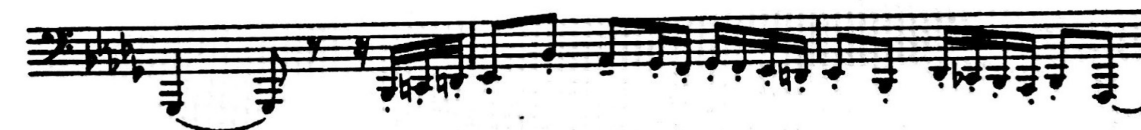
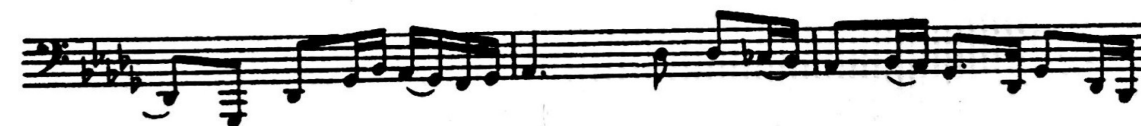


INSTRUMENTAL ENSEMBLES AUDITIONS

**Tuba Packet**

Blazhevich  
70 Studies  
Volume II

*Con moto* ♩ = 82-92





**INSTRUMENTAL ENSEMBLES AUDITIONS**

**Tuba Packet**

Ein Heldenleben  
(Battle Scene)

62  $\text{♩} = 120-132$  63 4

Ride of the Valkyries  
(Major Section)

$\text{♩} = 80-94$



**INSTRUMENTAL ENSEMBLES AUDITIONS**

**Tuba Packet**

Symphony in B<sup>b</sup>  
Mut. 1

♩ = 72-80    **(J)** *tutti*    Hindemith *cresc.*

141

145

150

154